

Real Estate

SAN FRANCISCO CHRONICLE AND SFCHRONICLE.COM | Sunday, June 6, 2021

SPONSORED CONTENT

San Rafael estate boasts Japanese-inspired design, abundant opportunities for indoor/outdoor living K4



OLGA SOBOLEVA

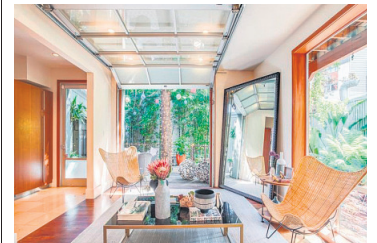
Meticulously built by Len Brackett the primary suite displays handcrafted exposed post and beam construction, hand planed cedar flooring, walls built by a "Kogei" award artisan, and quintessential Shoji doors, an homage to Japanese design.



Paul Rollins Photography, LLC

Price Point

84 Commonwealth Ave.,
San Francisco L1



PROPERTY POST

Marvelous Modern in Secret SoMa Forest

3

Sponsored by: **Sotheby's**
INTERNATIONAL REALTY

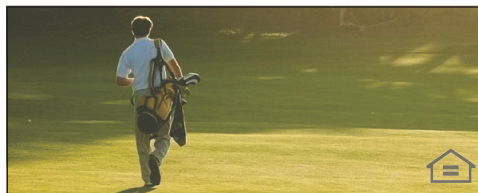


PROPERTY POST

Andaz Costa Rica Residences at Peninsula Papagayo:
Second Homes Seen Differently

3

Sponsored by: **ANDAZ** COSTA RICA RESIDENCES
AT PENINSULA PAPAGAYO



To get any closer to the
fairway, you'd need clubs.

Monterey Bay Golf Course Residences • Sales Office Now Open By Appointment

Sales: Shea Homes Marketing Company (CalDRE #01378646); Construction: Shea Homes Limited Partnership (CSLB #855368). Equal housing opportunity.


THE ENCLAVE
AT CYPRESS GROVE
TheEnclaveBySheaHomes.com

COVER STORY

SPONSORED CONTENT

Surrounded by 2,000 acres of parkland, Raven Ridge offers unrivaled access to the best of Marin living

Situated on nearly 10 acres of lush foothills, 2000 Bayhills Dr. takes advantage of its serene park-like setting to offer an unsurpassed private San Rafael ridgetop retreat with memorable views. The driveway to this exquisite three-bedroom, three-bathroom home is enveloped by majestic oaks, laurel, manzanita and madrone trees that adorn the Mt. San Pedro Ridge. The shingle façade and exterior entry announces the quiet still beauty that awaits inside.

Asian-inspired design's tranquil understated elegance infuses the interior with a sense of calm. The thoughtfully designed open floor plan presents social spaces, with 12-foot ceilings, that seamlessly flow for a fluid living experience.

The living room showcases resplendent outlooks through tall French doors opening to the expansive deck, constructed from 100-year-old redwood repurposed wine tanks. A river rock stone fireplace was artfully installed by a third-generation West Marin stone mason. The formal dining room accommodates intimate or large gatherings and the considerable chef's kitchen has abundant cabinetry, two sinks, Dacor stovetop, Viking oven, and center island with seating.

The family room provides a cozy casual space and the library, with built-in desk, is perfect for contemplation and study. Access to three sizable decks creates an enviable indoor/outdoor California lifestyle making every day feel like a vacation getaway.

The extraordinary primary en suite wing has its own deck and is defined by exceptional craftsmanship, sweet Hinoki cedar wood aromas and win-



HEIMO SCHMIDT/ACE HOME TOURS

A gas fireplace warms a living room that steps out to a deck through a pair of French doors.

dows that frame sylvan vistas and iconic Mt. Tamalpais.

Meticulously built by Len Brackett and featured in "Building the Japanese House Today," this room displays hand-crafted exposed post and beam construction, hand-planed cedar flooring, walls built by a national treasure or "Kogei" award artisan, and

quintessential Shoji doors, an homage to Japanese design.

The primary bath features a FURO soaking tub enveloped by glass, for a transformative bathing ritual. Two lower level bedrooms with deck access and full bath. The detached secluded studio/office is ideal for an art/yoga studio, or home office. Incomparable grounds

have spellbinding settings and a jewel-like salt water pool. Bask in sunshine in the temperate microclimate and revel in the custom built spa's warmth.

Terraced gardens provide an array of vegetables and herbs and the fenced organic garden boasts heritage roses and fruit trees. Embraced by 2000 acres of open space, this home is the

furthest sited private property adjacent to protected parks, with no visible neighbors, yet close to Central Marin amenities. An appealing warm weather alternative to West Marin with easy accessibility to urban amenities.

World class recreation

Raven Ridge continues on K6

COVER STORY

SPONSORED CONTENT

Details

Address: 2000 Bayhills Dr., San Rafael

Price: \$3.295 million.

Features: Known as Raven Ridge, this three-bedroom, three-bathroom Japanese-inspired abode includes a deck built from repurposed wine tanks, a saltwater pool and an open floor plan sheltered by a 12-foot ceiling. Mature trees surround the home featuring terraced gardens and multiple outdoor gathering spaces. The kitchen boasts a pair of sinks, a Dacor stovetop, Viking oven, and a center island with seating, while the owner's suite offers hand-planed cedar flooring, Shoji doors and a FURO soaking tub.

Raven Ridge from page K4

nearby; fish, sail, hike, swim, bike, paddle or kayak. Poetic living is the hallmark of this home, from its sublime solitude, majestic ridgetop open skies, beautiful shimmering light, soaking in the hot tub under a full moon casting its light through the oaks' canopies, and a medley of greenery and glorious colors filling the horizon — all offered in this serene refuge.

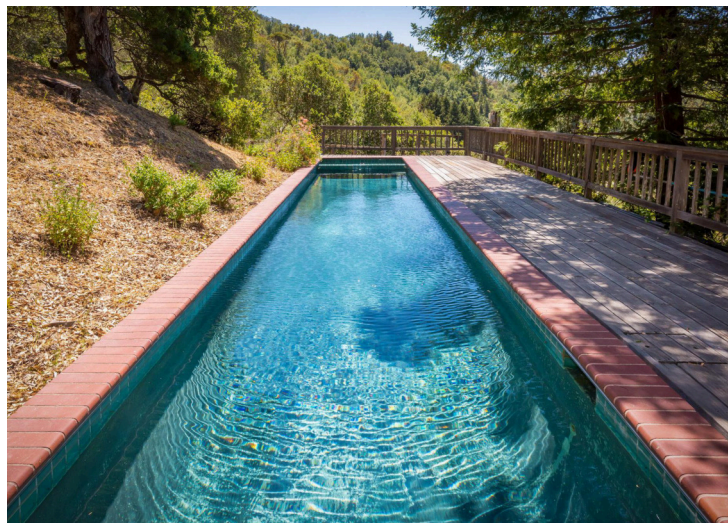
Elevate your lifestyle at this unrivaled private ridgetop sanctuary in harmony with its spectacular surroundings for unmatched Marin County living.

Take the virtual tour at www.bayhillsdrive.com.

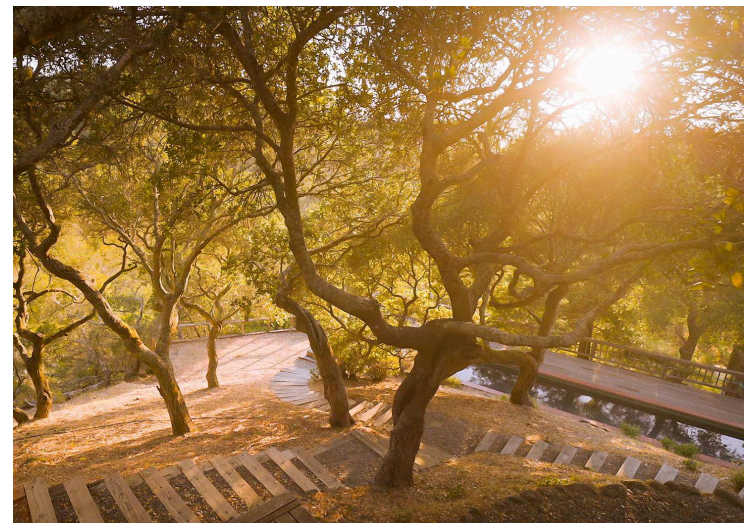


OLGA SOBOLEVA

Above: The owner's suite includes a spa bathroom with a FURO soaking tub. **Below left:** Spellbinding settings include a jewel-like saltwater pool. **Below right:** The San Rafael estate enjoys a private trail amid mature trees.



OLGA SOBOLEVA



CHRIS SITHI